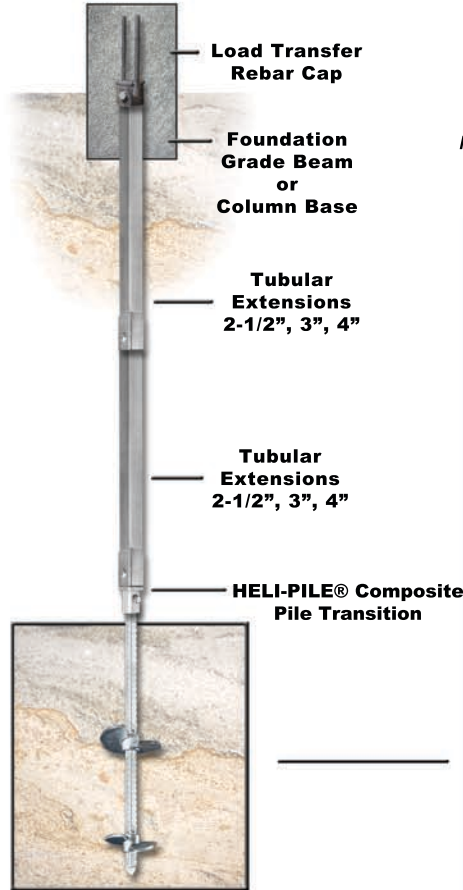
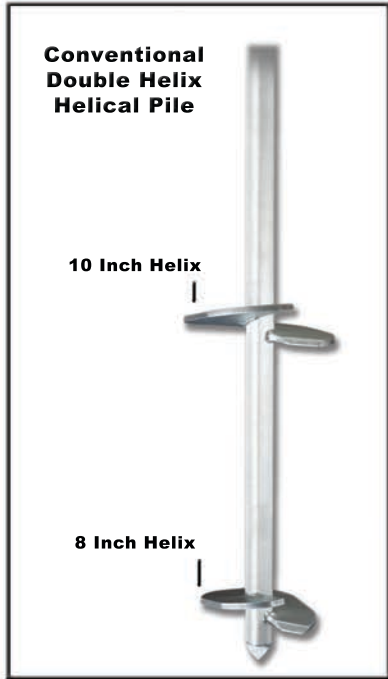


# HELI-PILE®

## Helical Composite Piles

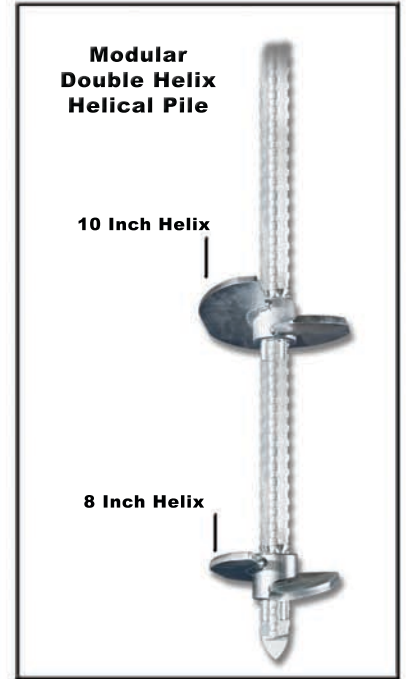
The Solution for Diverse Soil and Load Conditions

Conventional solid bar lead section - 1-1/2" & 1-3/4"  
Single and multiple helix lead configurations available (double helix shown)



Variety of pile caps and brackets for underpinning existing structures and new foundation construction (rebar cap shown)

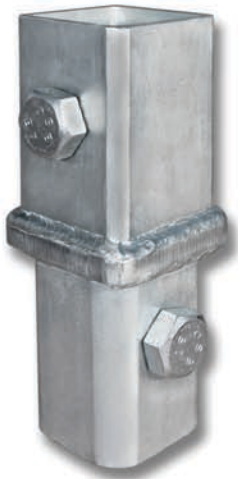
Modular lead section option - 1-1/2" & 1-3/4"  
On-site configuration of number and size of helices (double helix shown)



### HELI-PILE® Helical Composite Piles offer unparalleled advantages in a wide range of varying soil profiles

Benefits of solid bar lead sections combined with larger tubular section extensions

- Penetrating strength of solid bar lead sections for hard soils, cobble and debris
  - Flexibility of a modular lead section option, on-site configuration of number and size of piles helices
    - Greater pile stability of tubular for soft soils
- Added lateral load and overturning moment carrying capabilities of tubular



**HELI-PILE® Composite Pile Transition**



**HELI-PILE® Composite Pile Transition (Assembled)**

| Part Number | Pile Lead Section Shaft              | Pile Extension(s) Shaft | Maximum Installation Torque (lb-ft) | Ultimate Pile Compression Capacity (lbs.) | Ultimate Pile Tension Capacity (lbs.) |
|-------------|--------------------------------------|-------------------------|-------------------------------------|---|---------------------------------------|
| TR-1525     | 1-1/2" Round Corner Solid Square Bar | 2-1/2" Square Tubular   | 7,000                               | 70,000                                    | 60,000                                |
| TR-1730     | 1-3/4" Round Corner Solid Square Bar | 3" Square Tubular       | 11,000                              | 110,000                                   | 62,000                                |
| TR-1740     | 1-3/4" Round Corner Solid Square Bar | 4" Square Tubular       | 11,000                              | 110,000                                   | 105,000                               |

HELI-PILE® • 5135 Ward Road • Wheat Ridge, CO 80033 • Phone: 303-423-0591 • Website: [helipile.com](http://helipile.com)