

HELLI-PILE®

Tubular Helical Pile



WWW
HELLIPILE
COM

...The Next Generation

TUBULAR:

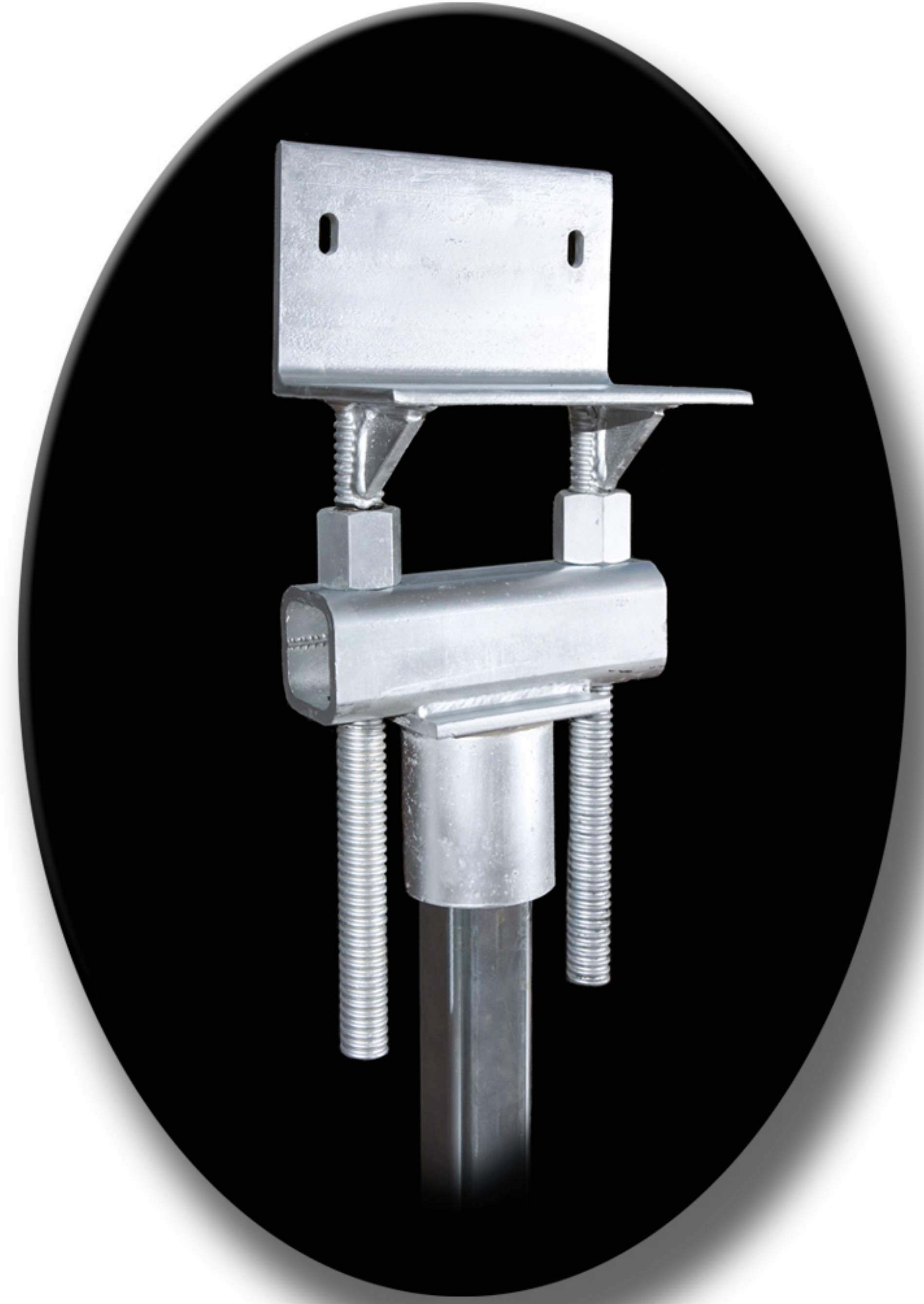
- **The obvious answer to soft soil piling concerns**
- **Efficient torque transfer**
- **Clear visual indicator of torsional deflection**
- **Eliminates over torquing concerns associated with pipe style helicals**
- **All helices are 1/2" inch thick (80 ksi) steel**



**New Construction
Rebar Cap**



**Precision Fit,
High Strength
Coupling**



**Underpinning Bracket
(U.S. Patent 5,800,094)**

Heli-Pile® Steel Tube Helical Pile

EASY DESIGN AND ORDER GUIDE

STEP 1: SELECT LEAD SHAFT

If the ultimate load* is:	Select Lead Shaft	Cat. No.	Lengths
0 to 40,000 lbs	2.0 inch Steel Tube	HPTL-20	3 ft, 5 ft, 7 ft
0 to 70,000 lbs	2.5 inch Steel Tube	HPTL-25	3 ft, 5 ft, 7 ft
0 to 110,000 lbs	3.0 inch Steel Tube	HPTL-30	3 ft, 5 ft, 7 ft
0 to 300,000 lbs	4.0 inch Steel Tube	HPTL-40	3 ft, 5 ft, 7 ft

* The ultimate load is the design load multiplied by the factor of safety, usually 2.

STEP 2: SELECT EXTENSION SHAFT

If the ultimate load* is:	Select Extension Shaft	Cat. No.	Lengths
0 to 40,000 lbs	2.0 inch Steel Tube	HPTE-20	3 ft, 5 ft, 7 ft
0 to 70,000 lbs	2.5 inch Steel Tube	HPTE-25	3 ft, 5 ft, 7 ft
0 to 110,000 lbs	3.0 inch Steel Tube	HPTE-30	3 ft, 5 ft, 7 ft
0 to 300,000 lbs	4.0 inch Steel Tube	HPTE-40	3 ft, 5 ft, 7 ft

One bolt and nut is included with each extension.

* The ultimate load is the design load multiplied by the factor of safety, usually 2.

STEP 3: SELECT NUMBER OF HELICES

2.0 inch Tube Shaft (HPTL-20):	0 to 40,000 lb ultimate load, use 1 helix min.
2.5 inch Tube Shaft (HPTL-25):	0 to 70,000 lb ultimate load, use 1 helix min.
3.0 inch Tube Shaft (HPTL-30):	0 to 70,000 lb ultimate load, use 1 helix min. 70,000 lb to 110,000 lb ultimate load, use 2 helices.
4.0 inch Tube Shaft (HPTL-40)	0-70,000 lb ultimate load, use 1 helix min. 70,000 lb to 110,000 lb ultimate load, use 2 helices 110,000 lb to 210,000 lb ultimate load, use 3 helices 210,000 lb to 300,000 lb ultimate load, use 4 helices

STEP 4: SELECT LOAD TRANSFER HARDWARE

Load Transfer Hardware	Catalog Numbers 2.0 inch Shaft	Catalog Numbers 2.5 inch Shaft
Rebar Cap	HPT-2-RC	HPT-25-RC
Plate Cap	HPT-2-PC	HPT-25-PC
Underpinning Bracket	UP-200	UP-250

Load Transfer Hardware	Catalog Numbers 3.0 inch Shaft	Catalog Numbers 4.0 inch Shaft
Rebar Cap	HPT-3-RC	HPT-4-RC
Plate Cap	HPT-3-PC	HPT-4-PC
Underpinning Bracket	UP-300	UP-400

STEP 5: ORDER

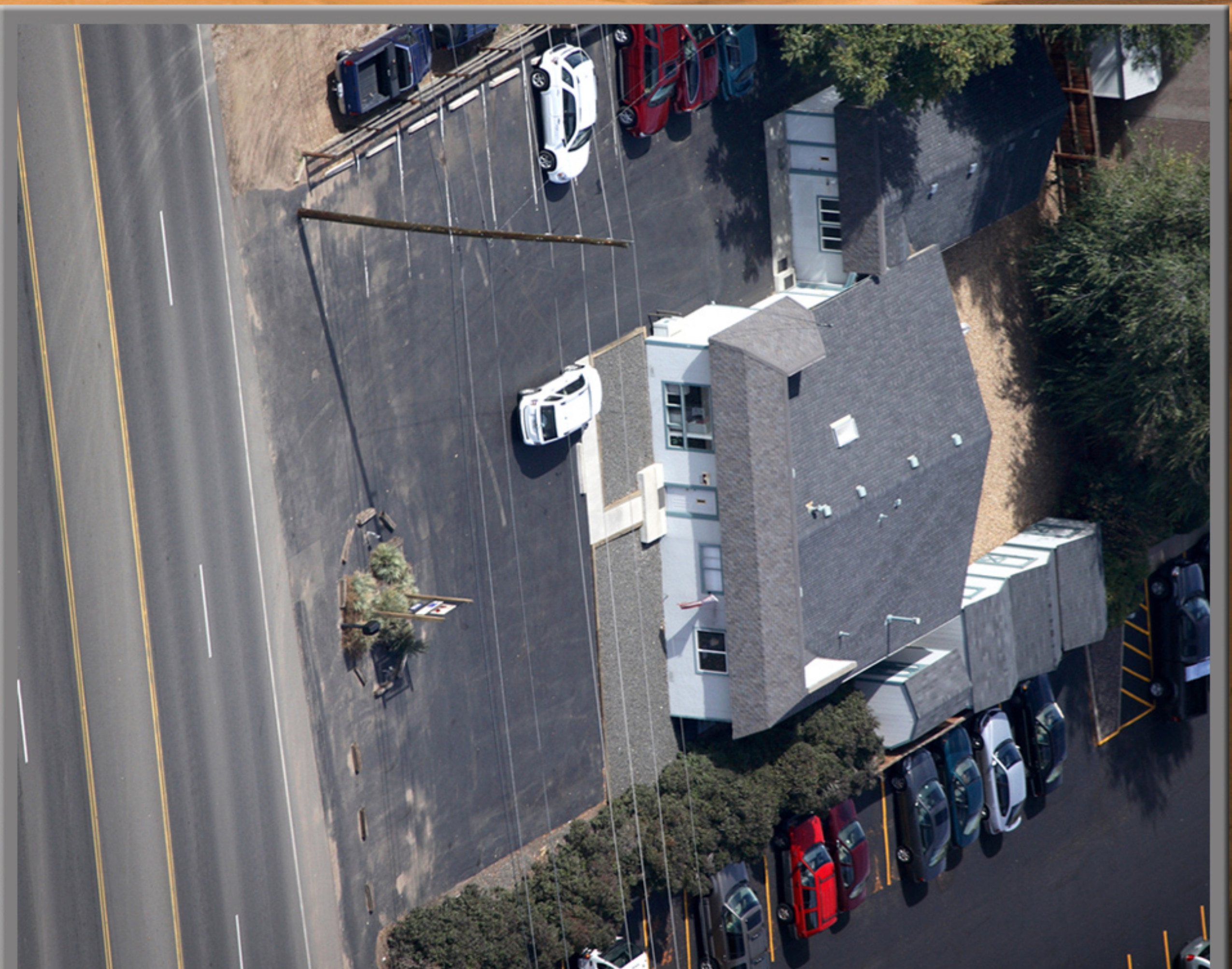
1. Call us at (303) 423-0591
2. Fax order to (303) 423-9155

All products in stock for immediate shipment
Phone: (303) 423-0591
Email: info@helipile.com
www.HELIPILE.com



IMR

INTERNATIONAL
MARKETING &
RESEARCH, INC.



Heli-Pile® Manufacturing Plant

Arvada, Colorado



IMR World Headquarters

5135 Ward Road
Wheat Ridge, Colorado 80033
USA

Phone: 303-423-0591

Fax: 303-423-9155

Email: info@heli-pile.com

www.helipile.com

Denver, Colorado

Engineering Test Lab Custom Fabrication Distribution

Golden, Colorado

Proudly Made In The USA