

HELI-PILE®

**Conventional Helical
Pile and Tieback**

[www.
HELIPILE
.com](http://www.HELIPILE.com)

...The Next Generation

CONVENTIONAL:

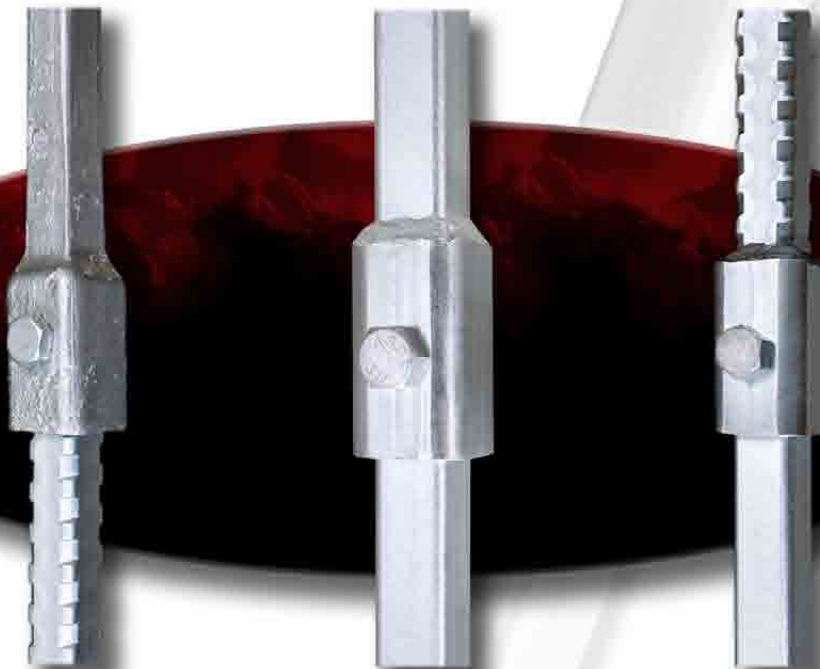


HELI-PILE®
Conventional Pile

- A better conventional solid steel extra high strength helical pile
- Cold forged precision consistent fit coupling
- Welded coupling for greater strength. Eliminates shaft heat damage caused by upset coupling process
- All helix modules use 1/2" thick high strength (80 ksi) steel
- All helix leading edges sharpened and rock cut
- ASTM B633 ROHS compliant zinc coating ISO 9000 certified applicator

HPC-15X, 1-1/2" round corner square bar rated 70,000 lbs ultimate
HPC-17, 1-3/4" round corner square bar rated 110,000 lbs ultimate
All helices are rated to 35,000 lbs design capacity

HELI-PILE® solid shaft products are interchangeable



Conventional extension with HELI-PILE® modular lead shaft option

HELI-PILE® Conventional Shaft Coupling

HELI-PILE® modular termination with conventional extension option



**The UP-150 and UP-175
Underpinning Brackets
(U.S. Patent 5,800,094)**

- **Easy to install**
- **No special jacking tools**
- **Low profile, no protrusions**
- **200,000 lbs ultimate capacity**

**HELI-PILE® Underpinning
Bracket Installation**

HELI-PILE® Termination Options



**UP-150 and UP-175
Underpinning Bracket
(U.S. Patent 5,800,094)**



**New Construction
Rebar Cap**



**New Construction
Plate Cap**

All products in stock for immediate shipment

Phone: (303) 423-0591

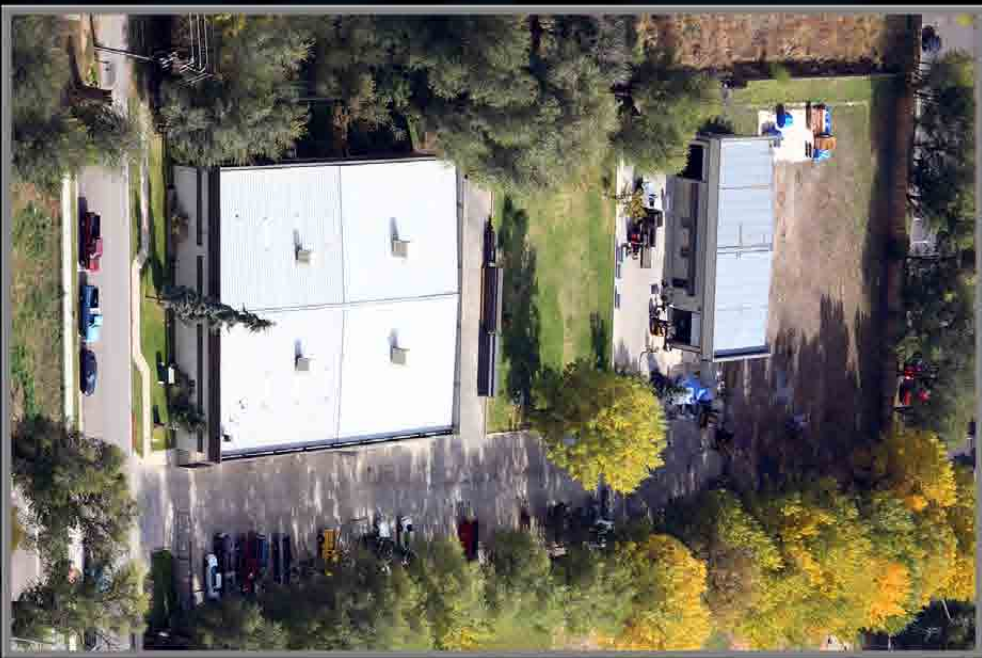
Email: info@helipile.com

www.HELIPILE.com



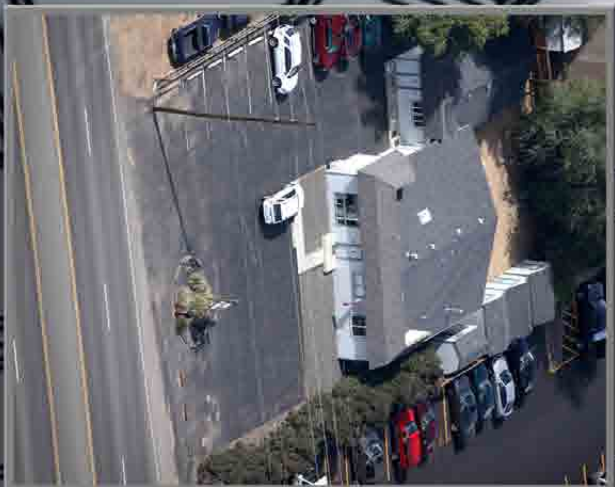
IMR

INTERNATIONAL
MARKETING &
RESEARCH, INC.



Helipile® Manufacturing Plant

Arvada, Colorado



IMR World Headquarters

5135 Ward Road
Wheat Ridge, Colorado 80033
USA

Phone: 303-423-0591
Fax: 303-423-9155
Email: info@helipile.com

www.HELIPILE.com

Denver, Colorado



**Engineering Test Lab
Custom Fabrication
Distribution**

Golden, Colorado

Proudly Made In The USA

